

Stradview

Stradview is a visualisation and analysis package for 3D imaging data.

Stradview uses novel algorithms to produce:

- High quality surface models
- Volume and surface based visualisations (including movies using scripts)
- Cortical bone mapping
- Export data or surfaces in re-orientated formats

Stradview supports Windows and Linux (64bit) and accepts a variety of data formats including: DICOM, Mindways QCT, ITK, Analyze, Nifti, NRRD and many 2D image formats.

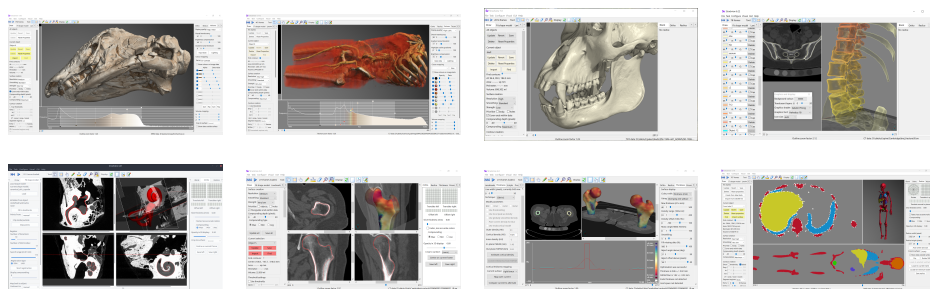
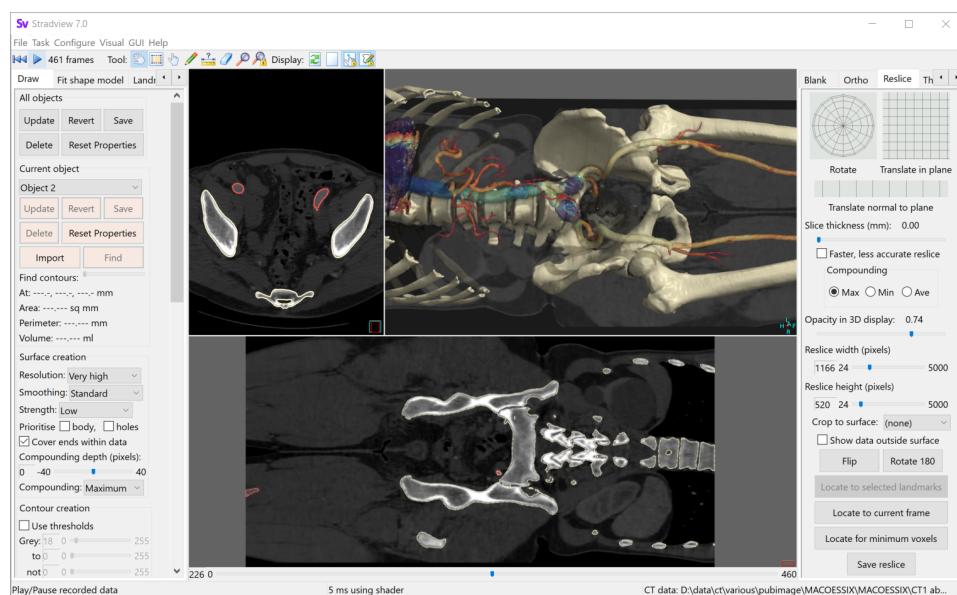
Category
Software

Authors
Professor Graham Treece

Learn more



For more information please visit the



Explore other available products at